

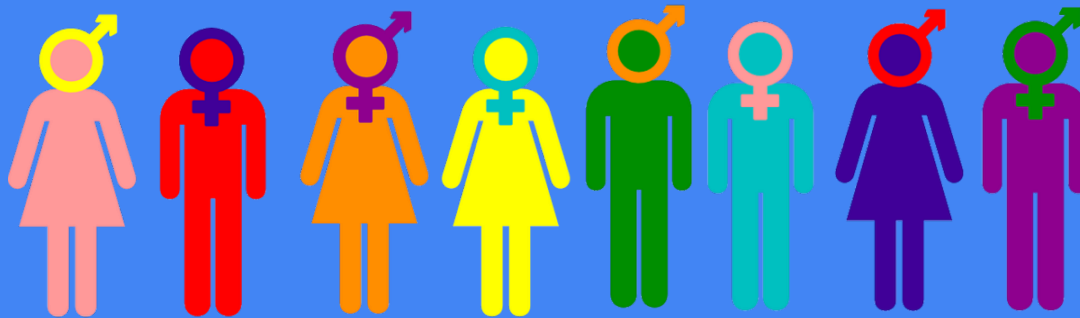
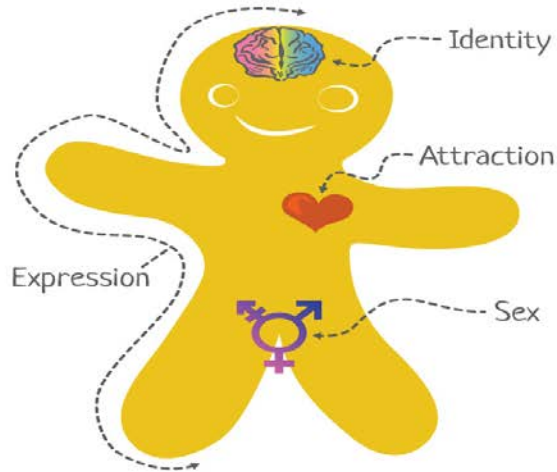
# Gender Analysis

## Health Communications

Harvard T.H. Chan School of Public Health  
WGH 207, Spring 2021



# The Genderbread Person v3.3 by its pronounced METROsexual.com



# Biological Sex

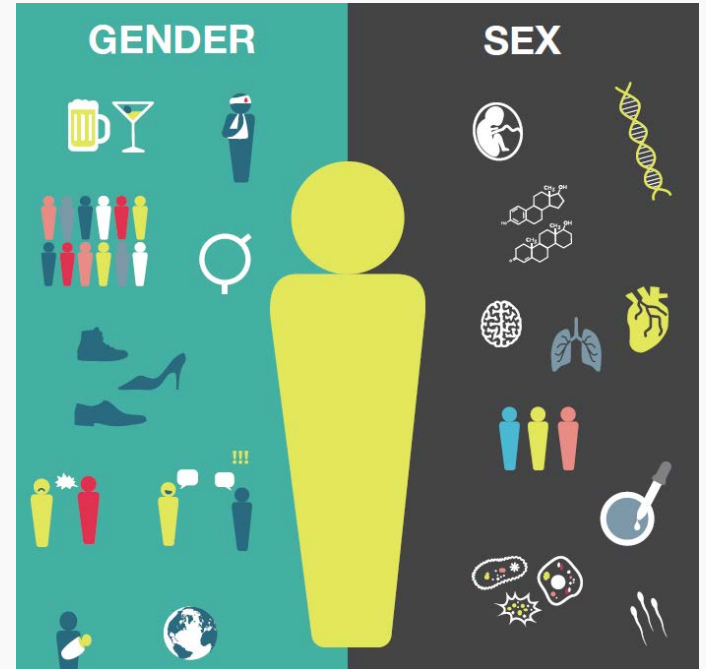
- Sex refers to biological factors:
  - a. Chromosomes
  - b. Hormones
  - c. Primary Sexual Characteristics
  - d. Secondary Sexual Characteristics
- Three common classifications:
- Intersex is a term to describe individuals born with variations in chromosomal arrangement or sexual/reproductive anatomy that is not fully congruent with either male or female.
- This is why “assigned male at birth” (AMAB) and “assigned female at birth” (AFAB) are better descriptors when communicating specifically about biological sex.

## BIOLOGICAL SEX



# Gender

- Gender refers to the socially -constructed roles, behaviours, expressions and identities of girls, women, boys, men and genderdiverse people.
- Gender Identity is defined by the internal perception of how one understands their identity on the spectrum of gender.
- Gender Expression is defined by how one outwardly expresses their gender to others based on traditional gender roles.



# Gender

- Cisgender: refers to people who identify with the gender that aligns with the sex they were assigned at birth.
- Transgender: refers to people who identify with a gender different than the sex they were assigned at birth.
- Although many people think of gender as binary (ie. Male or Female), gender exists on a spectrum.
- Individuals who do not identify with either male or female gender labels often identify as Gender Non-Conforming and/or Non-Binary.



# Sexual Orientation

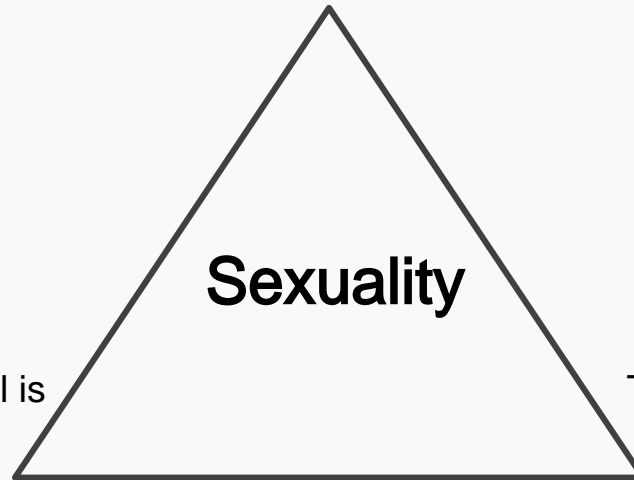
- Sexual orientation describes the physical, emotional, and/or romantic attraction one feels toward another gender - in reference to one's own gender identity.



**Sexual Identity**  
How an individual identifies their sexual orientation to themselves or publically.

**Attraction**  
Who an individual is attracted to.

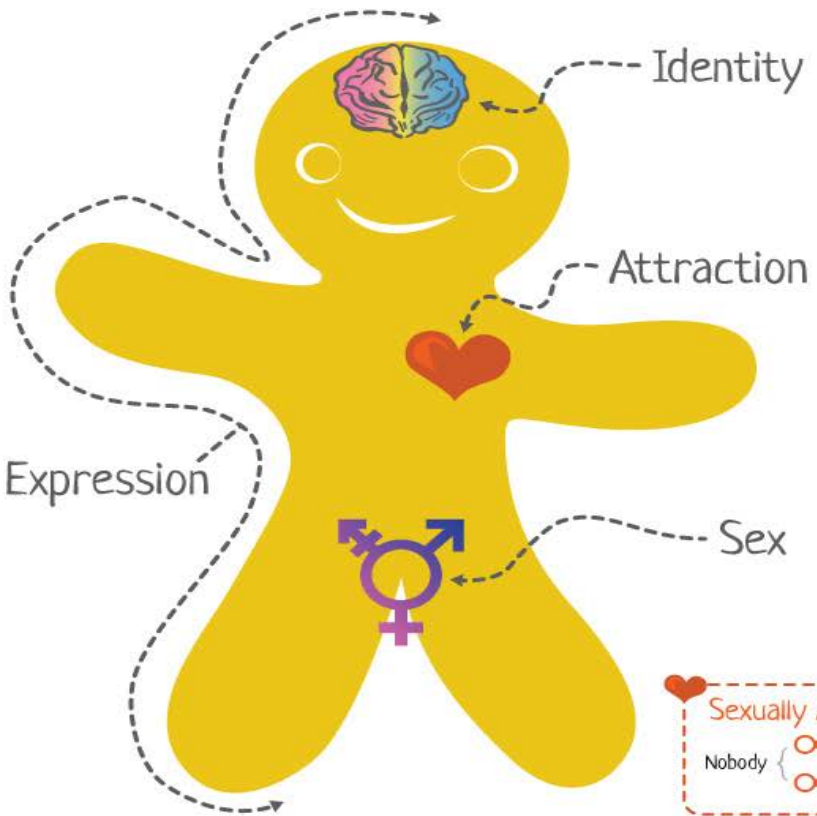
**Behavior**  
The sexual contacts an individual has.



# The Genderbread Person v3.3

by its pronounced **METROsexual**.com

Gender is one of those things everyone thinks they understand, but most people don't. Like *Inception*. Gender isn't binary. It's not either/or. In many cases it's both/and. A bit of this, a dash of that. This tasty little guide is meant to be an appetizer for gender understanding. It's okay if you're hungry for more. In fact, that's the idea.



Plot a point on both continua in each category to represent your identity; combine all ingredients to form your Genderbread. 4 (of infinite) possible plot and label combos

### Gender Identity

Indicates a lack of what's on the right.

Woman-ness

Man-ness

How you, in your head, define your gender; based on how much you align (or don't align) with what you understand to be the options for gender.

Labels: "woman", "man", "two-spirit", "gender-queer"

### Gender Expression

The ways you present gender; through your actions, dress, and demeanor; and how those presentations are interpreted based on gender norms.

Feminine

Masculine

Labels: "butch", "femme", "androgynous", "gender neutral"

### Biological Sex

The physical sex characteristics you're born with and develop, including genitalia, body shape, voice pitch, body hair; hormones, chromosomes, etc.

Female-ness

Male-ness

Labels: "male", "female", "intersex", "MtF Female"

### Sexually Attracted to

Nobody { (Women/Females/Femininity)

(Men/Males/Masculinity)

### Romantically Attracted to

Nobody { (Women/Females/Femininity)

(Men/Males/Masculinity)